

# WHY ROLMAKO?

11 facts that will help you decide on long-term cooperation with the Rolmako brand

 **Rolmako**<sup>®</sup>

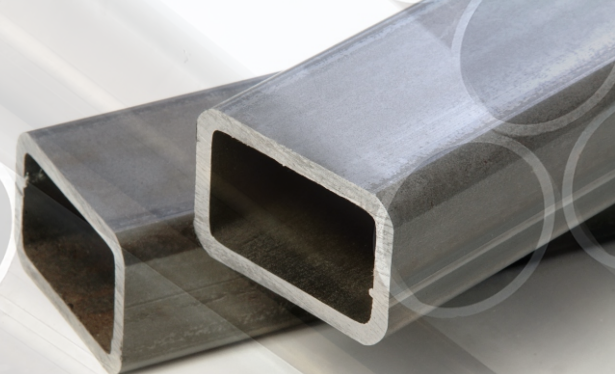
ALL RIGHTS RESERVED © ROLMAKO

## INDESTRUCTIBLE tillage machines

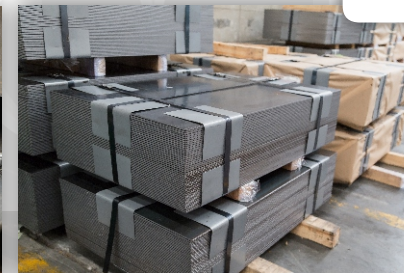
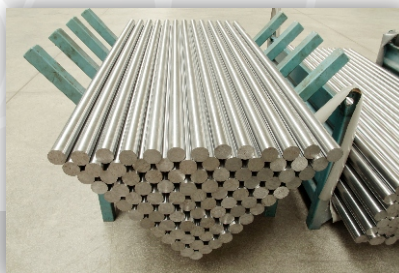
Farmers looking for agricultural tools draw special attention to the execution quality, durability and usability of products. The market of soil cultivation devices is very extensive with various types of cultivation solutions. This publication clearly presents why it is worth having a closer look at the Rolmako agricultural devices and it makes the Clients aware that it is the proposal of a manufacturer, whom you can trust without the slightest risk. These are products from which you get more than you expect.



## Steel providing a competitive advantage



Larger and more and more powerful tractors subject the tillage machines' construction elements to increasingly greater stresses reaching their limits. The high load strength and extended operating time are expected from modern agricultural structures. The achievement of a quality final product is only possible with the share in the production of high-grade steel, therefore, in the manufacture of our tillage machines, we use high grade Swedish fine-grained S500MC and S700MC steel, carbon and boron steel for heat treatment and Hardox wear-resistant steel. The use of quality steel products makes our products high-strength agricultural devices capable to operate at high working speeds with high surface capacity.



A large green tractor with a blue Rolmako tillage implement is shown in a field. The tractor has a red wheel and a blue frame. The implement is a blue frame with multiple black discs and a large black roller. The tractor is moving through a field of dark soil, with a golden field in the background under a blue sky with white clouds. The number '50' is visible on the side of the tractor.

**Rolmako®**

# The highest crop quality

Rolmako continually works on the development of products. For us, the most important are field tests, therefore, our machines are subjected to numerous field tests in real conditions. We have spent most time finishing up the components operating in the ground, the selection of appropriate tools, the proper attack of tillage tines and discs, finishing up the distance of mounting them on the machine frame. These are the most important aspects impinging on the quality of work executed by the machine. Our most important argument that supports the selection of blue machines with the Rolmako logo is to obtain a result of the highest crop quality leading to the achievement of the greatest profitability from every cultivated hectare of land.

This is one of the factors that successfully allows to compete with the leaders of the tillage machinery industry. Positive opinions of farmers all over the world confirm our belief that our work on the development of machines for land cultivation contributes to the best effect of work that our machines perform for their owners.





**Rolmako**

## Original machinery components

By purchasing the Rolmako agricultural machine, you can be sure that this product is equipped with branded high-quality components providing durability, safety and long service life. OFAS, SKF, FKL, BELLOTA, and SCHARMÜLLER are our important partners, but we cannot forget about our proven suppliers of iron castings, hydraulic components, springs and rubber products. All our business partners have made the efforts and endeavour, which allowed us to obtain a positive result of the final quality product for many years of operation. A combination of branded components of machines with the best price-quality ratio results in the situation that we can successfully compete with the tillage machinery industry leaders.

ZIEGLER



AgriHub



BKT

SCH  
SCHARMÜLLER



SKF

BELLOTA

ATW  
SYSTEM



**U 671 PRO**

## Oversized agricultural structures

The Rolmako tillage machines stand out from the competition with greater empty weight. The company personnel responsible for the development constructs agricultural equipment for the toughest working conditions. The Rolmako machines effectively cultivate the land in the most challenging regions of the world, without the necessity of their ballasting. The amount of steel used in the construction of the machine results in the fact that these are massive cultivating tools, which allow to use great powers of modern agricultural tractors and are an investment for many years of operation on a farm.



**Rolmako®**



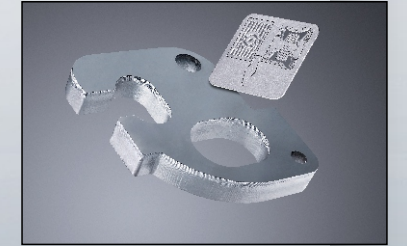
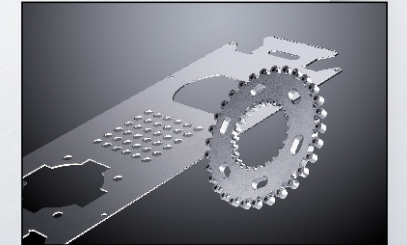
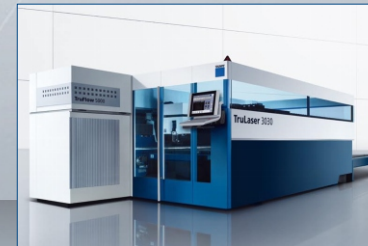
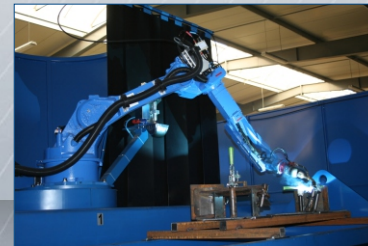
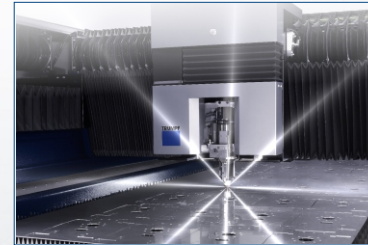
## Agricultural machines tested in many markets of the world and in various climatic conditions

In the countries of Europe, sandy areas of Africa, large fields of North America and Australia; in each and every of the locations the Rolmako machines have proven their reliability and usefulness in various cultivation conditions. The experience gained in many areas of the world has allowed to create a universal offer that makes it possible to provide the devices for land cultivation to the most remote parts of the world.



# The most modern manufacturing methods

Rolmako constitutes not only powerful agricultural structures, but also innovative manufacturing methods. The modern manufacturing techniques allow us to maintain repeatability with the high quality of the product. The sheet metal laser processing with the FIBER and CO2 technologies, plasma and gas cutting of steel, bending and forming on a hydraulic press with a pressure of 2,000 tonnes, robotic welding, shot blasting of metal surfaces and efficient powder coating lines allow us to provide products for the most demanding Clients.





## The most favourable machine quality-price ratio in the industry

Our knowledge, experience and mobilisation for continuous development have allowed us to achieve the most favourable agricultural machine quality-price ratio. The excellent quality-price ratio allows us for continuous and dynamic growth of sales and makes our products very attractive in the agricultural market. The Rolmako machine purchase is a profitable investment. It provides the highest efficiency and low operating costs guaranteeing a quick return on investment.





**Rolmako**

**80%**

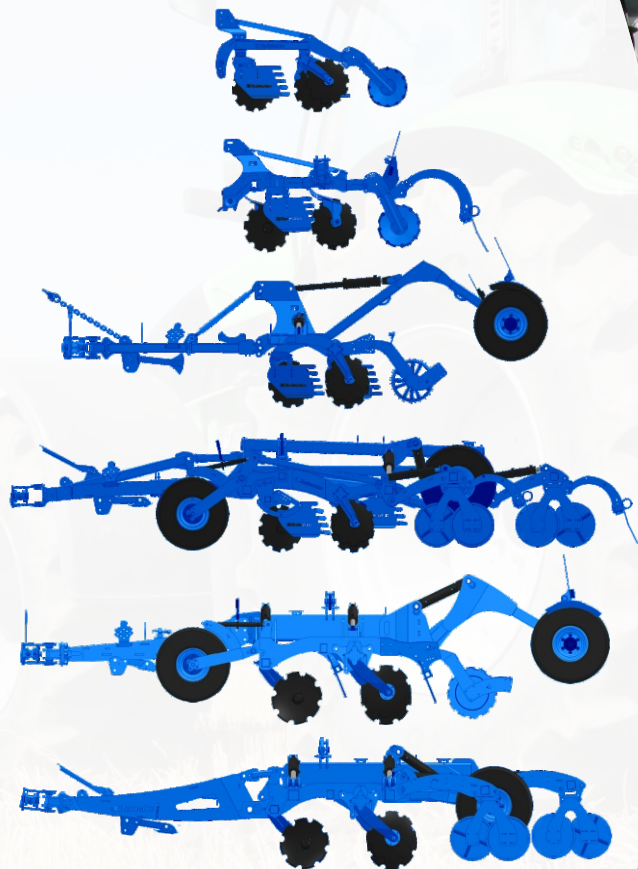
## The export coefficient is over 80%

The fact of a high export share is not accidental. The Rolmako machines have successfully competed with foreign agricultural equipment for many years. The Rolmako Polish agricultural machines, in the largest part, operate on fields of the most developed countries (Germany, Great Britain, France, Spain, Italy, Finland, Australia, etc.), where the requirements for agricultural equipment are very high. Our products have proven their usefulness in different soil systems there. Many agricultural companies have experienced that Rolmako is a reliable partner of modern agriculture.

**8**

# Flexible configuration of tillage machines adapted to the soil requirements

The individual approach to every Client, as well as cooperation and exchange of experience with the Clients all over the world have allowed us to build a large number of configurations and retrofitting of agricultural machines, so as to adjust the device to the field conditions in which it will operate. Numerous equipment options available for tillage machines will allow to select the best solution that meets your expectations in terms of productivity, the quality of working elements and financial capacity.

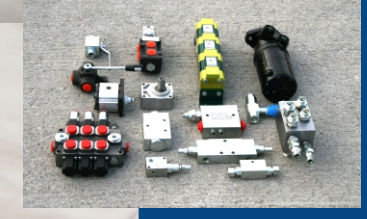




## Sales and after-sales support for business partners

We care about a close relationship with our Clients, therefore, we offer stationary or remote trainings, where traders of our company will explain the offer details and present an advantage of solutions over competitive ones as well as familiarise you with the product changes and innovations. During the current negotiations with the Client, our product specialists are happy to help with the machine configuration, e.g. the right tillage roller selection. The after-sales service, assistance in solving problems arising during the current operation of our agricultural devices and a quick response to requests from our Clients are crucial for us.





## Availability of the most popular operating components on the market of spare parts

The agricultural machines are designed bearing in mind the user and everyday operation, therefore, by purchasing the machine you will have no problems with the availability of the most popular spare parts. Rolmako applies the soil cultivation systems known all around the world, consisting of generally available working components, which contributes to low operating costs. In the Rolmako products, it is important to use high-quality components from the renowned manufacturers recommended by the company.

 **Rolmako**<sup>®</sup>