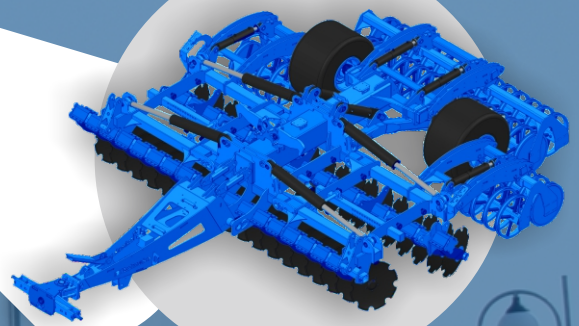


A photograph of a modern Rolmako building with a large glass facade and a white metal extension. The sky is blue with some clouds. A blue semi-transparent rectangle is overlaid on the image, containing the Rolmako logo and the company name. The website address 'www.rolmako.pl' is visible on the white part of the building. The foreground shows a gravel area with some plants.

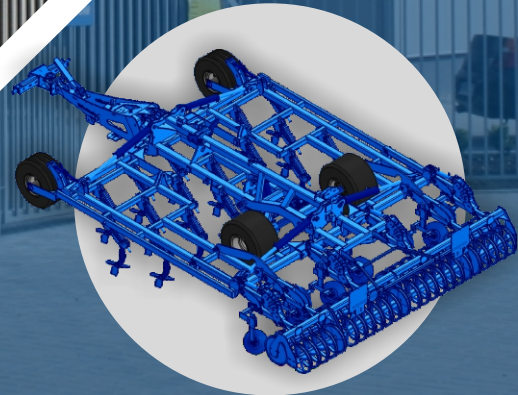
Rolmako®

A SOLID PARTNER OF MODERN AGRICULTURE



Who are we?

Rolmako is a family company, which through the application of modern technologies, cooperation with the best vendors in the industry and continuous investments in innovative manufacturing methods and development of its product, is a prominent Polish manufacturer of agricultural machinery and spare parts. A vast majority of the production goes to export markets around the world.



What distinguishes us from the competition?

2

Over 30 different types of tillage rollers for tillage machines



1

A broad portfolio of additional accessories for tillage machines



3

Renowned vendors of the components used in the manufacturing of agricultural machine parts



Rolmako in numbers

Since 1992

1+1 locations

150+ employees

7400 tonnes/year

1800 pcs/year

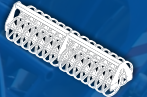
30+ sales to countries
outside Poland

80% export

30+ rear tillage rollers

75%+ $\geq 4,0$ m H*

 Rolmako



*H - hydraulically folding machine.

Soil cultivation

- Seedbed cultivators
- Stubble cultivators
- Disc harrows
- Ploughless soil cultivators
- Subsoilers



Feed preparation

- Stationary bale wrapper
- Self-loading bale wrapper
- Grain crushers
- Ridgers for compost piles and clamps



Company specialization

Single-set rapeseed harvesting

- Rapeseed harvesting extensions

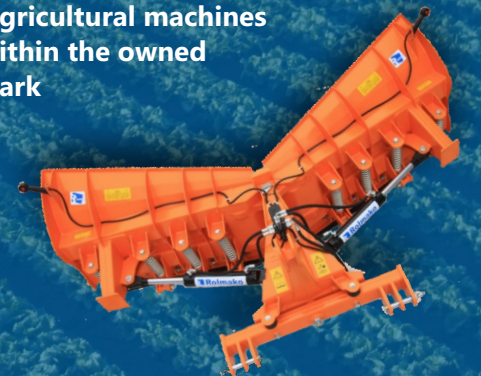


- Combine header trailers



Other production

- Snow ploughs
- Parts for agricultural machines
- Services within the owned machine park



THE BEST QUALITY-TO-PRICE RATIO IN THE INDUSTRY

The excellent quality-price ratio puts our agricultural machines among the best selling products in the Polish and foreign agricultural markets.

We know that the foundation stone for a successful cooperation is a product of the highest quality.

We focus our efforts on building a harmonious team of qualified employees, cooperating with the best vendors in the business, constant coordination with the Customers, who inspire us to continuously improve and modernize agricultural machinery and optimize the manufacturing process, which enables us to deliver products of the highest quality, at most competitive prices. Each agricultural machine is individually tailored to your needs, so it makes it possible to get the best value for your money.

Highest quality + competitive price = 100% Customer satisfaction

Engineering office

Our own design talent enables us to actively introduce product modifications and improvements, which makes it possible to eliminate many issues, which could appear in the course of operation, already at the engineering stage, prior to manufacturing a first prototype. We execute comprehensively complex structures, from the design and visualisation to manufacturing at our own production plant. We offer advice in selecting the concept and the best solution.

Product research and development

Every Rolmako agricultural machine, prior to being put into production, is subject to numerous operational tests. Field tests and positive feedback from the farmers regarding the operation of our new products are the most important aspect to us. Before a machine is painted in the company - characteristic blue, it requires a lot of time until it reaches a Customer, as a fully polished product.

Designed with



7	B-047	TULEJKA Ø88xØ78 - 26	4
8	B-050	g=15	2
9	B-051	g=12	2
10	B-081	g=13	1
11	B-083	g=13	4
12	B-090	g=12	1
13	B-091	g=13	2
14	B-092E	g=15	4
15	B-095	g=10	2
16	B-100a	g=15	2
18	B-101c	g=15	2
20	B-102	tulejka Ø78xØ48 - 28	1
21	B-105	g=12	2
23	B-31	tulejka fi69	2
24	B-343b		2
25	B-345		1
26	B-585		1
27	B-635		1
28	B-635a		1
29	B-632		1
30	B-014		1
31	B-001B		1
32	B-1123		1

MATERIAL:		TYTUŁ: BROWNA S	
WAGA:		4,55kg; 5,0	
Komentarz:		ROZ. NR RYSUNK	
NARYS.		A4	
SPRAWDZ.		SKALA: 1:50	
DATA		7 października 2015	

NR	NUMER CZĘŚCI
3	BC-D6
3	3-115
3	3C-D2
3	BC-D4
3	BC-KS11
8	BC-747
9	BC-746
10	B-1074A
11	
12	
13	
14	
15	
16	
17	BC-751
18	BC-D5
19	BC-752

Technology

Agricultural machines are constructed thanks to the application of modern manufacturing methods (laser processing, plasma cutting, robotic welding, steel shot-blasting, powder coating and other numerically controlled industrial machines). Rolmako is continuously investing in innovative manufacturing methods and the development of its products.



- Steel sheet machining centre



- Robotic high-quality welding



- Heat treatment of agricultural machine parts



- Shot-blasting of steel elements



- Powder coating



MISSION

The mission of Rolmako is sustainable development of the products, innovative expansion of the manufacturing capabilities and ensuring full satisfaction of our Customers. The primary objective is to provide the Customers with agricultural machinery and services of the highest quality, which help them achieve a fast return on their investments.

VISION

Rolmako strives to become a manufacturer of agricultural machines recognized around the world, with its greatest advantage being the strength of constructed agricultural structures, the possibility to tailor the products to any cultivation condition and low operating costs, while maintaining the best quality-price ratio in the business.

STRATEGY

The main element of our sales strategy is a solid dealership network, developing and caring about close partnership relations with our distributors. The development strategies shall be implemented through the optimum use of intellectual and material resources and the execution of development programmes in the field of manufacturing and sales.



Constant increase of product export 80%+

Rolmako agricultural machines are proven and appreciated throughout Europe and other parts of the world. Thousands of sold agricultural machines and satisfied Customers are our showcase, enabling further development of export markets.



The attention to detail and execution quality of Rolmako machines has been appreciated in numerous world markets, with the vast majority of our manufacturing output exported, also outside the European continent. This provides us with extra motivation for further development and working on constant improvement of our products.

A comprehensive range of tillage machinery on the example of disc harrows

All disc harrow models

U 622



U 645



U 652



U 671 STANDARD



U 693



U 671 PRO



Division of disc harrows by the absorber

13x100 spring shock absorber,
used in U 622 machines



40x180mm rubber shock absorber,
used in U 693, U 652, U 645 machines



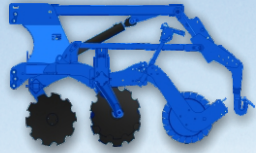
3D shock absorber with a 35x35mm spring,
used in U 652 machines



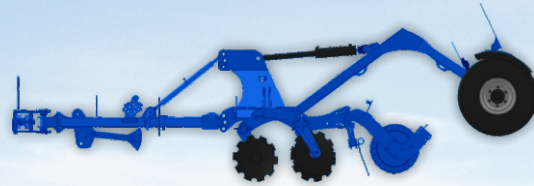
50x210mm rubber shock absorber,
used in U 671, U 671 PRO machines



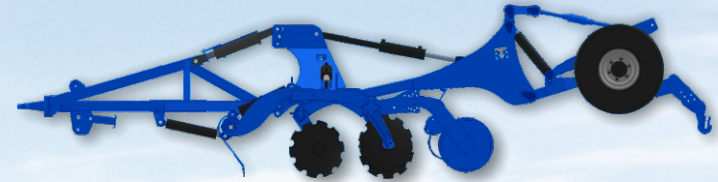
Various design and mounting variants for U 693



Mounted versions
with a seeder coupler



Trailed version (drawbar + transport trailer)
with a spring comb between
the discs and the tillage roller



Trailed version with a seeder coupler
(drawbar + transport trailer + seeder coupler)
equipped with a hydraulic drawbar and a Crossboard drag



Trailed version
(drawbar + LONG transport trailer)
with a spring comb behind the tillage roller



Trailed version
(drawbar + tire-transport roller)
equipped with a seeder coupler



Trailed version
(drawbar + LONG transport trailer) with a U-ring tandem roller

Examples of option for the U 693 machine

4 operating element variants

4 disc bearing hub versions



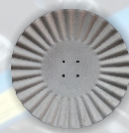
smooth disc



fine toothed disc



standard disc



ALFA disc



maintenance-free



operating

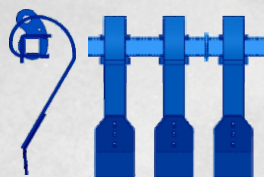


3 Crossboard drag types

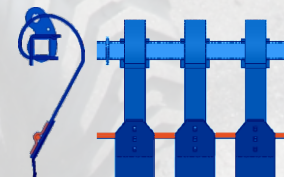
- 45x10mm spring
- 100mm runner



- 80x10mm spring
- 150 mm runner



- 80x10mm spring
- 150 mm runner
- stabilizer beam



Coupling with a tractor through a 3-point tractor mounting system or a transport hitch



Mechanical or hydraulic adjustment of operating depth



Over 20 tillage rollers



Mechanical or hydraulic drawbar



Various models of drive systems



Seeder-disc harrow coupling in a mounted or trailed variant



Oversized agricultural structures made of high-quality metallurgical products

The amount of steel we use to manufacture our tillage machines makes them massive devices for heavy-duty operation in the soil, which allow you to use the high power of modern agricultural tractors. The supporting frame of the machine is built for fields, with the harshest cultivation conditions. At the engineering stage of tillage machines with autonomous chassis, our designers rightfully assume that each additional kilogram on the device, translates into better operation in field conditions.





U 652



Cambridge roller



U 436



U 602



U 693



U 436



U 684



U 671 PRO



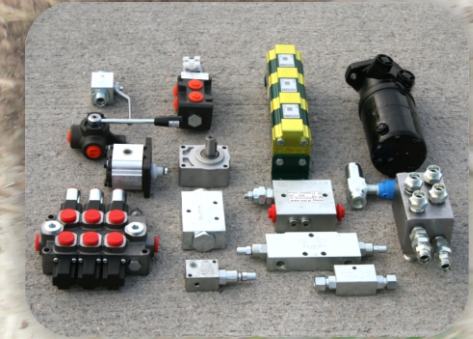
U 671

Spare parts availability

Rolmako agricultural machines are designed for users and everyday operation, which is why, when purchasing a machine, you will not have any problems with the availability of the most popular spare parts. The spare parts used in Rolmako machines are very popular all over the world, since they are soil cultivation systems designed from commonly available operating sub-assemblies. It is important for Rolmako products, to use high-quality components from recognized manufacturers recommended by the company.

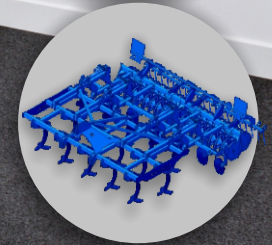
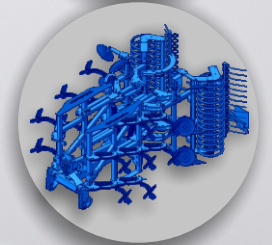
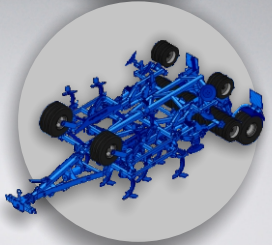
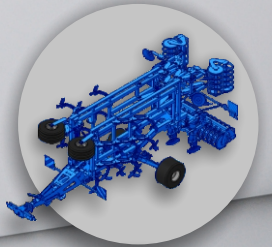


scharmüller



Trainings for the representatives of a sales dealer conducted at Rolmako HQ

We invite all distributors to send their commercial representatives to product trainings at Rolmako HQ. A single-day training allows you to fully get to know our portfolio of agricultural machinery and will prepare your salespersons for effective sales of our products.



Agricultural machinery catalogue

The catalogue of Rolmako products contains a broad package of agricultural solutions. In this publication, you will be able to find information regarding our new products and proven agricultural machines, manufactured for many years. When developing the catalogue, we have tried to show every available possible retrofitting and configuration option for the agricultural machines. It is certainly a must-read for each salesperson, who wants to be fully prepared to present Rolmako offer in order to achieve high sales results..

 katalog.rolmako.com

Agricultural machinery price list

Every year Rolmako publishes new prices lists, which present the broad assortment in detail, with a possibility to configure agricultural machines. In cases of misunderstanding or doubts regarding the option to select specific agricultural tools, please feel free to contact our sales department. We encourage you to make use of our offer of a training at the manufacturer's headquarters.

 pricelist.rolmako.com

Online sales materials for Customers


Technical-sales catalogue

It is an addition to the product catalogue and presents the basic dimensions and parameters of the machines, which helps to answer the most detailed questions of a Customer. The technical-sales catalogues can be also helpful in planning and organizing transport

 rolmako.com/technical-and-sales-catalog.pdf

Photo gallery

Photo gallery available at the Rolmako website is a collection of approx. 1500 images of agricultural machinery. It greatly complements the price list, allowing us to quickly illustrate a Customer a retrofitting option and thoroughly discuss offer details, based on the photos therein. You can download an entire set of photos onto the desktop of your PC from the website of the manufacturer.

 rolmako.com/360

Summary

When presenting our products, we can safely say that they successfully compete against the most expensive premium brand products, surpassing the products of the competition in terms of most factors.

Rolmako

Rolmako - Agricultural machinery

Factory No. 1 - ul. Gwarna 8

Factory No. 2 - ul. Nekielska 11 F

Polska, Psary Małe k. Wrześni

62-300 Września, woj. wielkopolskie

www.rolmako.com

Thank you for
your attention!